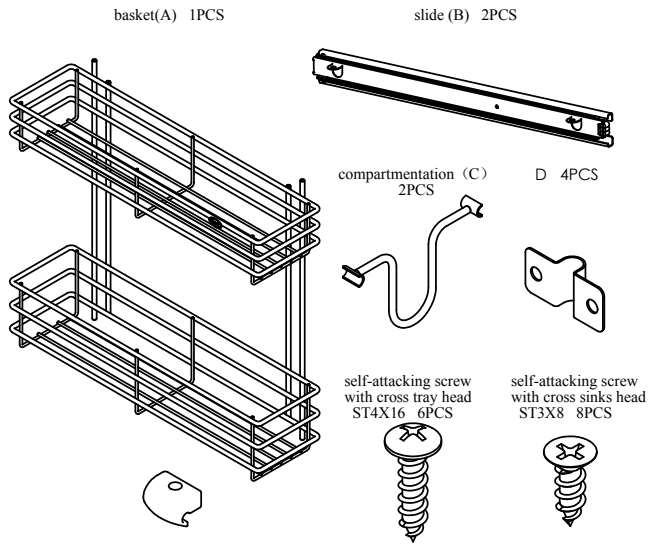


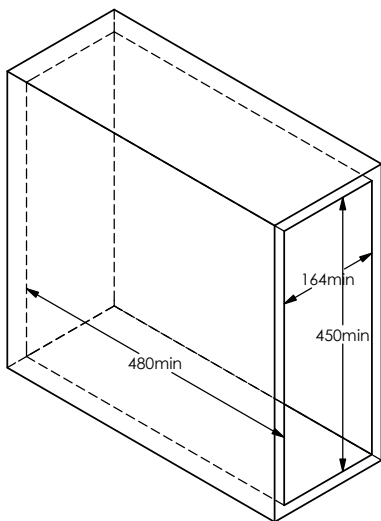
# PTJ003B Assembly manual for side drawing basket

## 1、Accessories of the product



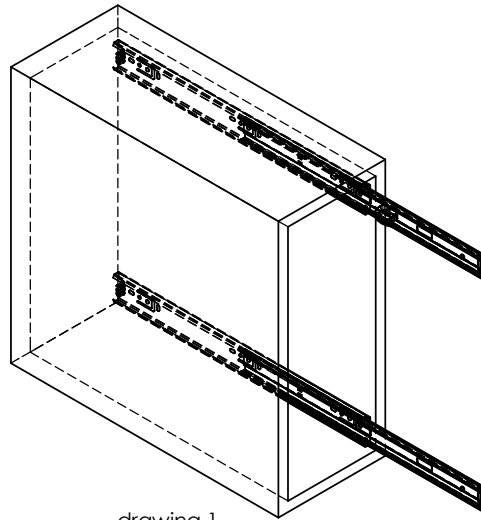
## 2、Specification of the product and the measurement of suitable cabinet (inside of the cabinet)

Specification of the product: D470\*W145\*H440



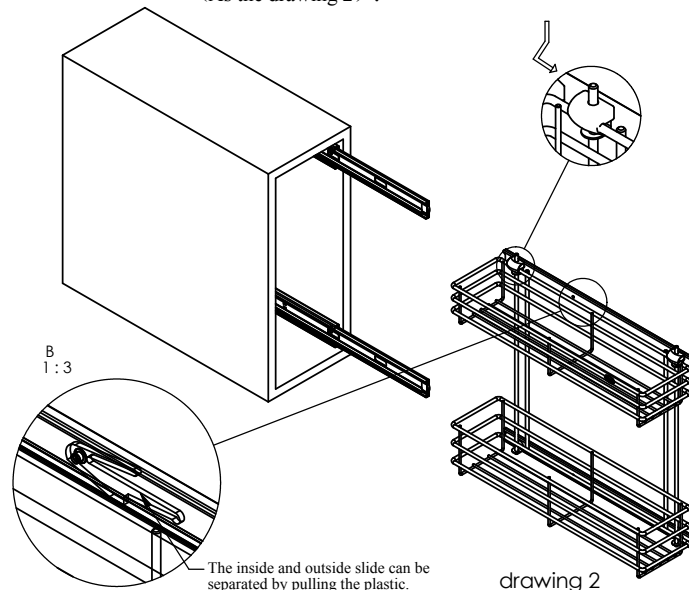
## 3、Fixing steps:

1) Use the self-attacking screw with cross tray head of ST4\*16 6PCS to fix the slide (B) to the cabinet. (As the drawing 1)

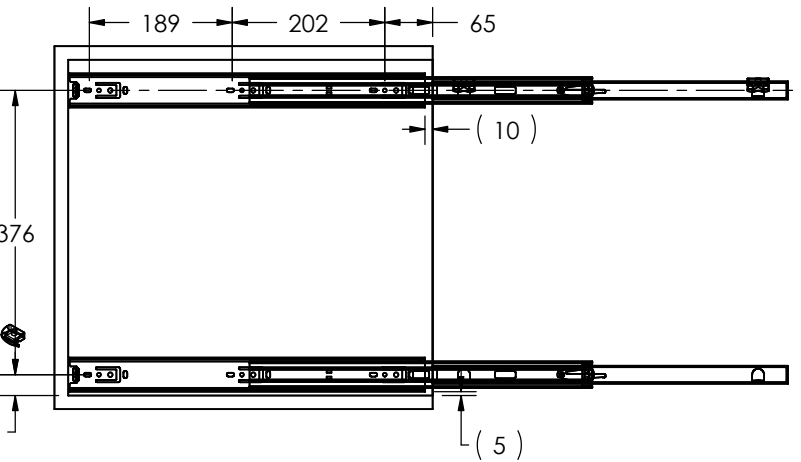


drawing 1

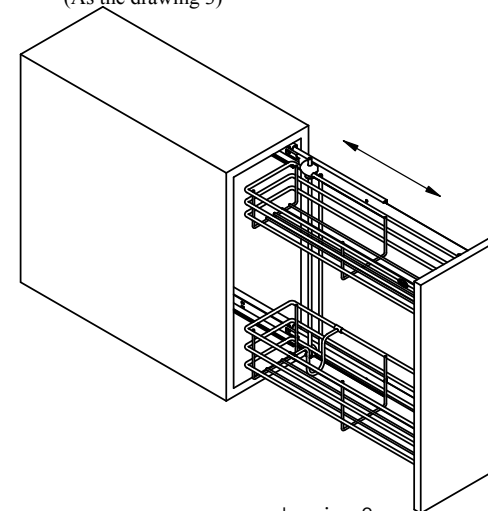
2) Separate the slide ;fix the basket(A) to the hole of slide(B) (As the drawing 2) :



drawing 2



3) If it is necessary to connect the board and basket,the self-attacking screw with cross sinks head 8 PCS attached and D can be used to fix the board and basket(A);and then wedge the compartmentation to finish the fixing. (As the drawing 3)



drawing 3